

# BARGES

BY CANAL BARGES & CRANES PANAMA

**PUTTING A FACE TO THE BARGE**

**Pages 3-5-7**



**24/7 TRANSPORTATION OF  
CARGO IN THE AMERICAS**

**Page 4**



Editorial

## PEOPLE BEHIND CB&C

Behind every successful company is a team of dedicated individuals steering it toward a vision and ensuring adherence to its purpose.

We begin with **Yosimar Salazar**, the youngest team member, who plays a critical role in promoting the company across various virtual platforms. Moving to strategic oversight, **Jose Carrizo**, a member of the board for the Colon Maritime Group, focuses on the commercial advancements of the company. On the operational front, **Edward Baules** is indispensable, overseeing the maintenance, permits, compliance, and dry docking of the barges.

The most seasoned member, **Guillermo Rosina**, brings his extensive expertise to the forefront in selecting, purchasing, and defining special projects for the barges. Together, these four gentlemen, supported by the robust framework of the CMG group of companies, embody the spirit of UBUNTU and pave the way for a promising future for this burgeoning enterprise.



## OUR FLEET

CB&C Monica Ruiz  
**5240** tons capacity

CB&C Denise Marie  
**5240** tons capacity

Rafael E Arosemena III  
**4500** tons capacity

Ana Lucia C  
**2500** tons capacity

Juan Diego A  
**800** tons capacity

Ana María A  
**800** tons capacity

Ruperto Rodríguez  
**600** tons capacity

Camila  
**500** tons capacity  
80-ton crane barge

Mr. Husband  
**450** tons capacity  
38-ton capacity barge

Doña Deniz  
**300** tons capacity

www.canalbarges.com.pa



## BARGE ANA LUCIA C.

LENGHT	WIDTH	CAPACITY
<b>48.77 m</b>	<b>19.81 m</b>	<b>2500 Tn</b>

info@canalbarges.com.pa

Ana Lucia C is named after the youngest female granddaughter of Rafael Arosemena Herrera, the esteemed founder of Talleres Industriales, which later led to the establishment of Canal Barges & Cranes.



Ana Lucia C is not only a legacy bearer but also a distinguished Northeastern University student, recognized for her academic excellence and committed to contributing to her country's prosperity.

This name symbolizes a bridge between the pioneering past and a hopeful, vibrant future, embodying the promise and responsibility of new generations to continue creating wealth for Panama.

The barge itself is a powerhouse in the fleet, boasting a capacity of 2500 tons. It is designed for versatility and strength, equipped to handle a wide range of critical missions—from port construction and ship-to-ship transfers to transporting heavy machinery and cargo to various destinations. Its robust design and substantial capacity makes it an indispensable asset in not only advancing infrastructure projects but also in ensuring the smooth operation of logistical challenges across the maritime sector.

We are immensely proud of both Ana Lucia C and the barge that carries her name, as they continue to contribute significantly to Panama's growth and development.



## 24/7 BULK TRANSPORT CAPABILITIES

Canal Barges & Cranes is a leader in providing versatile maritime transport solutions across the American continent, operating a fleet of solid deck barges that excel in the bulk transportation of materials.



A prime example of this capability is the utilization of one of our 5240-ton capacity barges for transporting steel ore along the vital waterway of the Orinoco River in South America. Our barges are meticulously maintained and equipped to handle a diverse range of bulk goods, from aggregates to minerals, demonstrating our expertise in adapting to the specific requirements of each cargo type and the unique challenges of different maritime routes. Canal Barges & Cranes continues to expand its service offerings, reinforcing its position as a relevant player in the development of infrastructure and the economic growth of regions across the Americas.

www.canalbarges.com.pa



## ANA MARIA A.

LENGHT	WIDTH	CAPACITY
<b>36.00 m</b>	<b>14.40 m</b>	<b>800 Tn</b>

info@canalbarges.com.pa

Ana Maria A honors the legacy of Rafael Arosemena Del Cid, son of our founder and a devoted professional who dedicated over two decades to enhancing Talleres Industriales.



Named after his daughter, Ana Maria Arosemena, this barge embodies the attributes of its namesake—a remarkable young woman admired for her inner beauty and sharp intellect.

Currently residing in Colombia, Ana Maria is nearing the completion of her university studies and is poised to become a community leader and an inspiration for others. She is deeply committed to her family and her community, actively preparing to generate opportunities and drive prosperity within her local ecosystem.

The barge "Ana Maria A" stands as a testament to resilience within the Canal Barges & Cranes fleet. With dimensions of 36 meters by 14.4 meters and a capacity of 800 tons, it has fulfilled diverse critical functions—from a dynamic working platform to a crane barge, piloting vessel, and cargo transporter.

Both Ana Maria and the barge that proudly bears her name play important roles in advancing Panama's development, exemplifying the commitment to excellence and growth that our company embodies.



## MARINE SOLUTIONS SERVICES BY CANAL BARGES & CRANES



ADAPTABLE FLOATING PLATFORMS FOR  
EVOLVING NEEDS

[WWW.CANALBARGES.COM.PA](http://WWW.CANALBARGES.COM.PA)

www.canalbarges.com.pa



## JUAN DIEGO A

LENGHT	WIDTH	CAPACITY
<b>36.00 m</b>	<b>14.40 m</b>	<b>800 Tn</b>

info@canalbarges.com.pa

Named in honor of Juan Diego Arosemena, the son of Lino Arosemena, CEO of Canal Barges & Cranes, the deck barge Juan Diego A embodies qualities akin to its namesake. Juan Diego, the person, is a standout student at MET International School, where he serves as the student body president. His dedication and humility are matched by his dream to attend a top global university, aiming to acquire essential skills that contribute to Panama's growth.

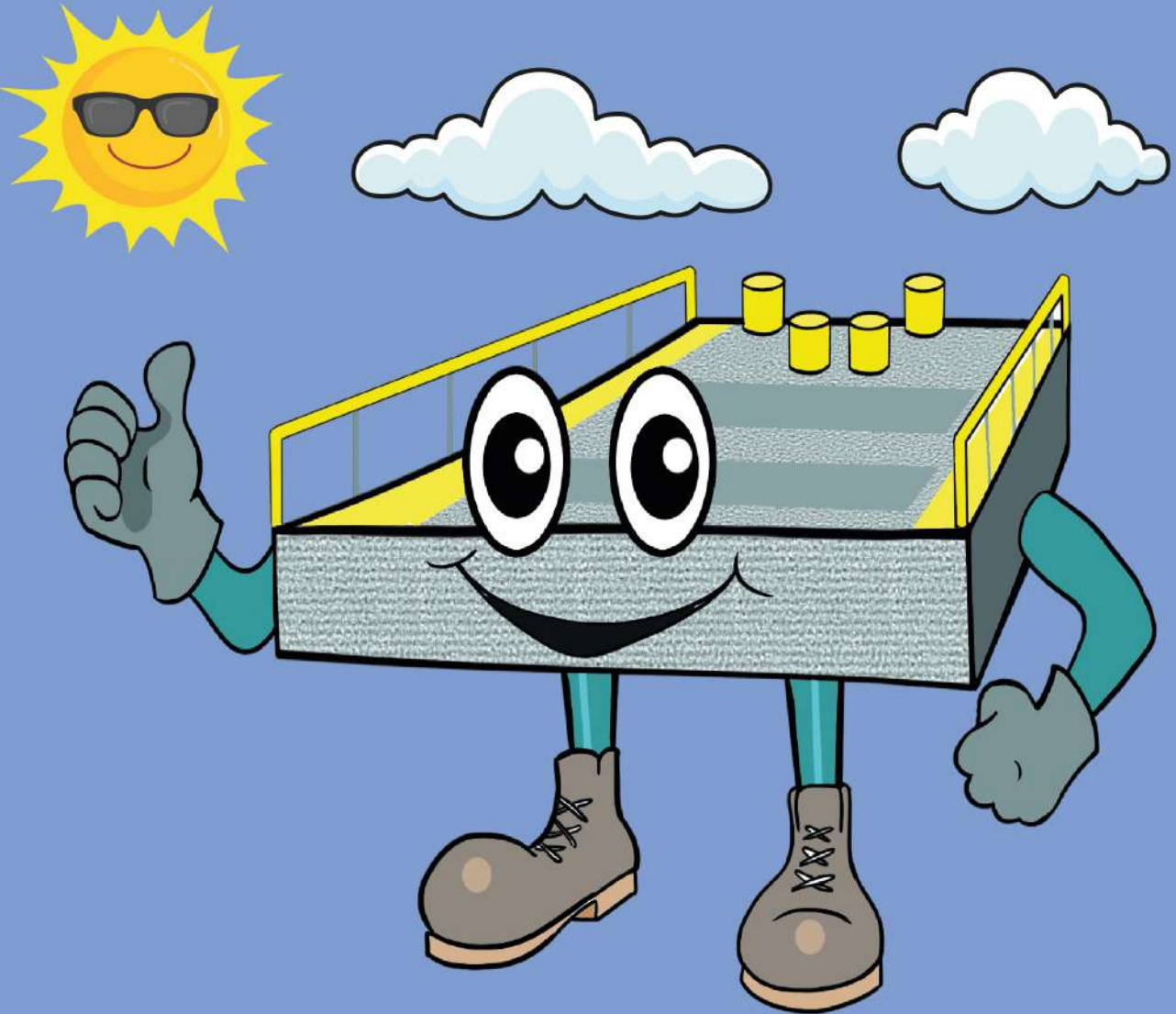


His approach to leadership and care reflects the barge's readiness and reliability in handling diverse projects.

The Juan Diego A deck barge, much like Juan Diego himself, is prepared for any challenge and is maintained in prime condition to ensure a high success rate in its missions. This parallelism highlights the company's pride in both its human and material assets. The barge's capability to effectively support a wide range of projects symbolizes the potential and responsibility that Juan Diego carries as he prepares to make a significant impact on his community and country.

We celebrate the synergy between Juan Diego's character and the vessel that proudly bears his name, demonstrating our commitment to excellence and nurturing leadership.

# Canal Barge & Cranes Panama, always ready to provide you with solutions



**Floating Platforms to keep your projects moving!  
24/7 ALL OVER AMERICA**

[www.canalbarges.com.pa](http://www.canalbarges.com.pa)  
[info@canalbarge.com.pa](mailto:info@canalbarge.com.pa)