

BARGES

BY CANAL BARGES & CRANES PANAMA

Volume 04
November, 2024

A TRIBUTE TO STRENGTH: THE CBC MONICA RUIZ

Page 2

CANAL BARGES & CRANES: PROUD PARTNERS IN PANAMA'S GROWTH

Pages 3 - 4

BARGE JUAN DIEGO PARTICIPATES IN THE RECONSTRUCTION OF A BUNKER TERMINAL

Page 6





A TRIBUTE TO STRENGTH: THE CBC MONICA RUIZ

The newest addition to our fleet, CBC Monica Ruiz, carries a name that symbolizes strength, responsibility, and unwavering support. Monica Ruiz, the barge's godmother and my wife, is one of the most extraordinary women I have ever met. Her resilience, commitment, and protective nature are qualities that align perfectly with the spirit of this barge, which will stand as a reliable guardian of our clients' interests and a cornerstone of our company's success. Over two decades, Monica has stood by my side, offering constant support through the challenges of my professional journey, even while staying out of the day-to-day operations of the business.

Naming the barge after Monica is not just a personal honor but a celebration of the values she embodies. Just as she protects and uplifts her family, the CBC Monica Ruiz will navigate the waterways with strength and dedication, ensuring the safe transport of materials and the successful completion of marine projects. Monica's unwavering presence has inspired this tribute, and I am proud to have her represent one of the most dependable vessels in our fleet.

Lino Arosemena.



OUR FLEET

CB&C Monica Ruiz
5240 tons capacity

CB&C Denise Marie
5240 tons capacity

Rafael E Arosemena III
4500 tons capacity

Ana Lucia C
2500 tons capacity

Juan Diego A
800 tons capacity

Ana María A
800 tons capacity

Ruperto Rodríguez
600 tons capacity

Camila
500 tons capacity
80-ton crane barge

Mr. Husband
450 tons capacity
38-ton capacity barge

Doña Deniz
300 tons capacity



CANAL BARGES & CRANES: PROUD PARTNERS IN PANAMA'S GROWTH

Panama's Pacific Coast is now home to one of the most advanced and expansive cruise terminals in the Americas, a testament to the country's position as a hub for global maritime activity. Canal Barges & Cranes played a pivotal role in this landmark project, contributing seven versatile deck barges for various critical tasks.



These included transporting rocks to reclaim land for the terminal and operating as crane barges to pilot and maneuver equipment essential to the construction process. Our involvement, under the leadership of CHEC during this phase, demonstrates our commitment to supporting projects that enhance Panama's stature as a world-class destination.



This terminal is more than just a cruise hub—it serves the broader shipping community by providing facilities for general vessel services, including ship repairs during the off-season. The terminal represents a cornerstone of Panama’s economic growth, generating fresh revenue, creating opportunities for maritime professionals, and offering steady employment for welders, fitters, mechanics, and electricians developing their skills in this vital industry.



We take immense pride in contributing to projects that not only strengthen Panama’s infrastructure but also create lasting value



for the port, the cruise industry, the authorities, and the entire shipping community. At Canal Barges & Cranes, we are honored to be part of Panama’s journey toward becoming a leader in global maritime excellence.

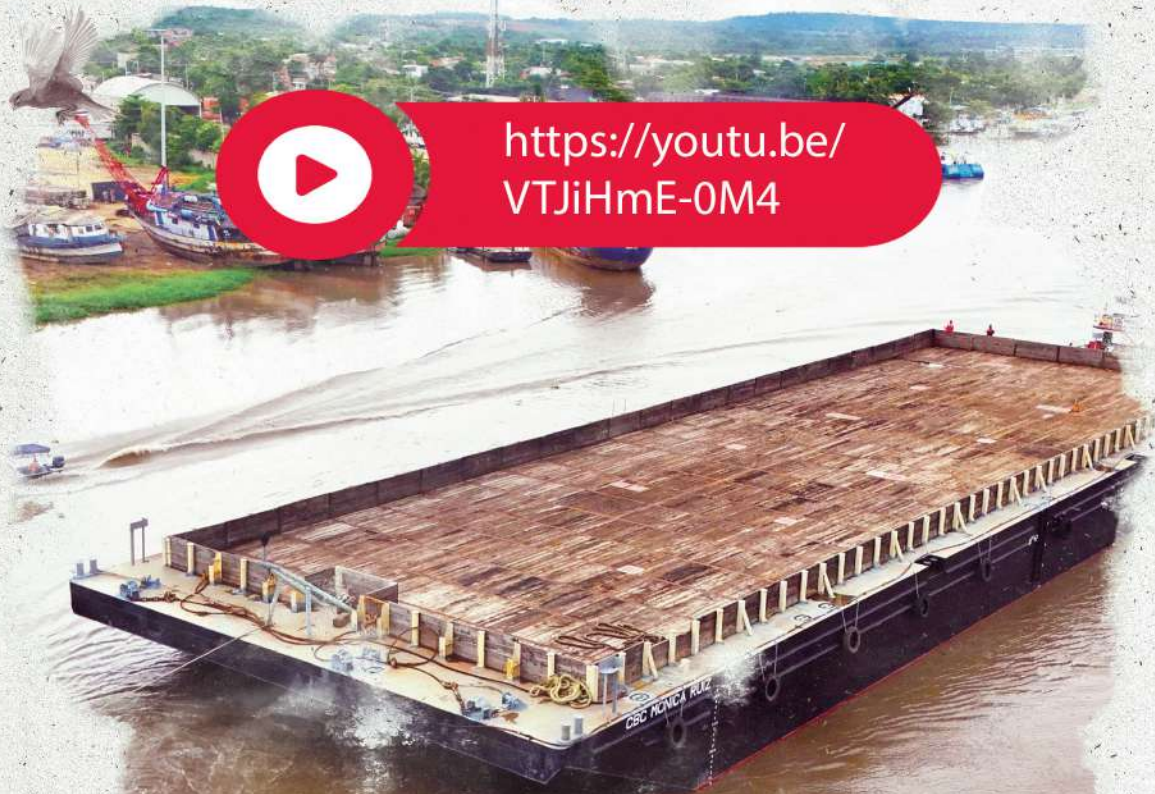




WWW.CANALBARGES.COM.PA



[https://youtu.be/
VTJiHmE-0M4](https://youtu.be/VTJiHmE-0M4)



PRESENTS:
THE VIDEO

OUR NEW BARGES

BARGE DENISE MARIE
BARGE MÓNICA RUÍZ

BARGE JUAN DIEGO PARTICIPATES IN THE RECONSTRUCTION OF A BUNKER TERMINAL



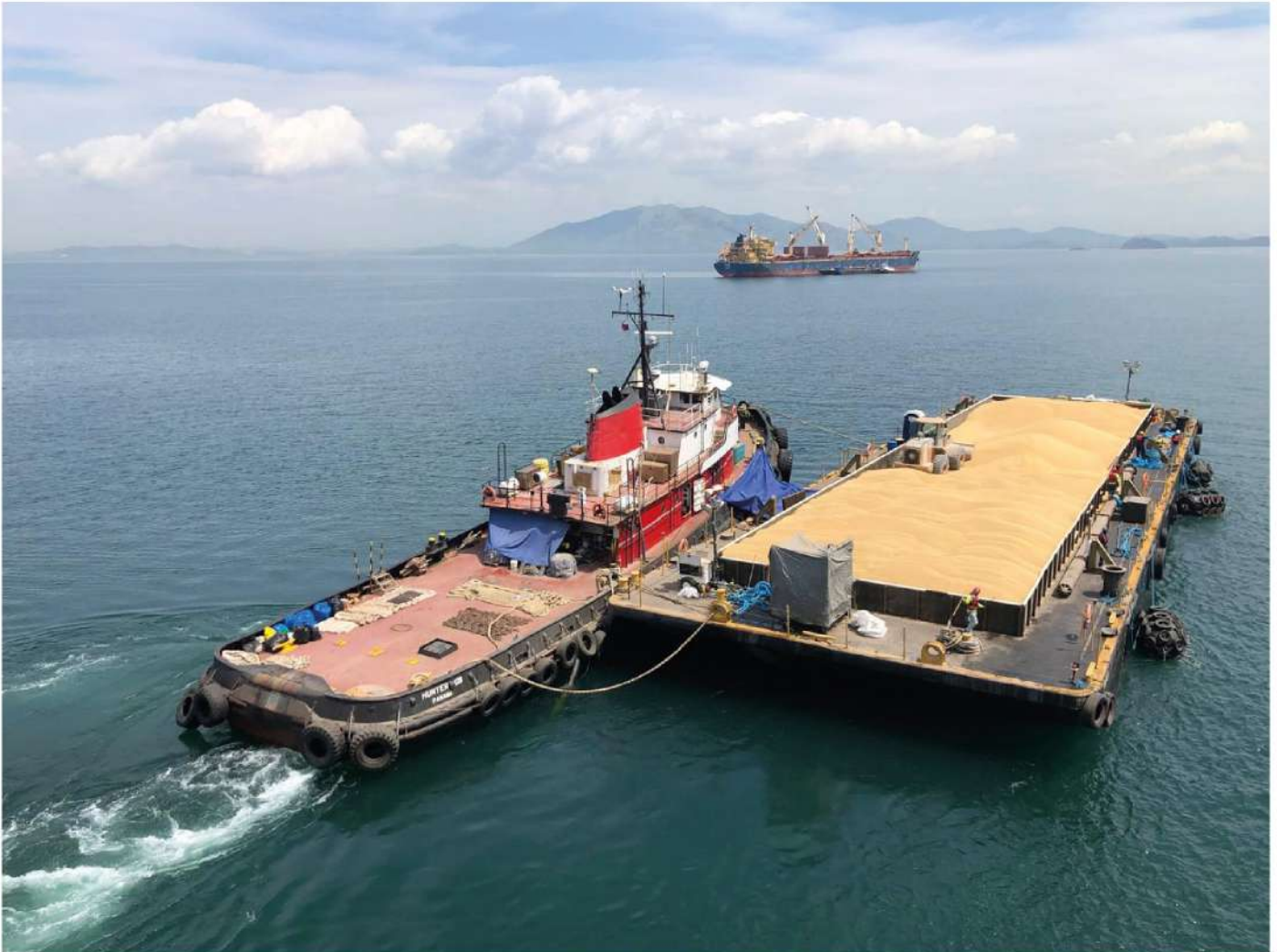
Canal Barges & Cranes (CB&C) proudly showcases the versatility of its fleet through the deployment of the barge Juan Diego A, which played a key role in the reconstruction of a vital bunker terminal on the Pacific side of the Panama Canal. With an 800-ton cargo capacity, Juan Diego A efficiently mobilized critical new structures from Balboa Port to the project site.

This reconstruction effort follows the severe damage caused by a VLCC vessel collision during the pandemic, highlighting the strategic importance of the terminal. By partnering with its sister company, Talleres Industriales, for push boat operations and handling complex logistics planning, CB&C ensured that the project progressed smoothly and on schedule.

The success of this operation underscores Canal Barges & Cranes' commitment to meeting customer needs, even on short notice. By combining reliable equipment, seamless coordination, and expertise in marine logistics, CB&C provided invaluable support to the general contractors leading the project. Whether transporting heavy structures or ensuring timely delivery, CB&C continues to uphold its reputation as a trusted partner for complex marine infrastructure projects across the Americas.



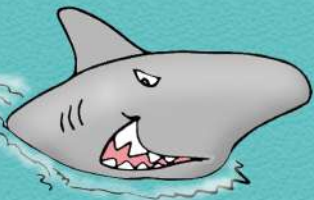
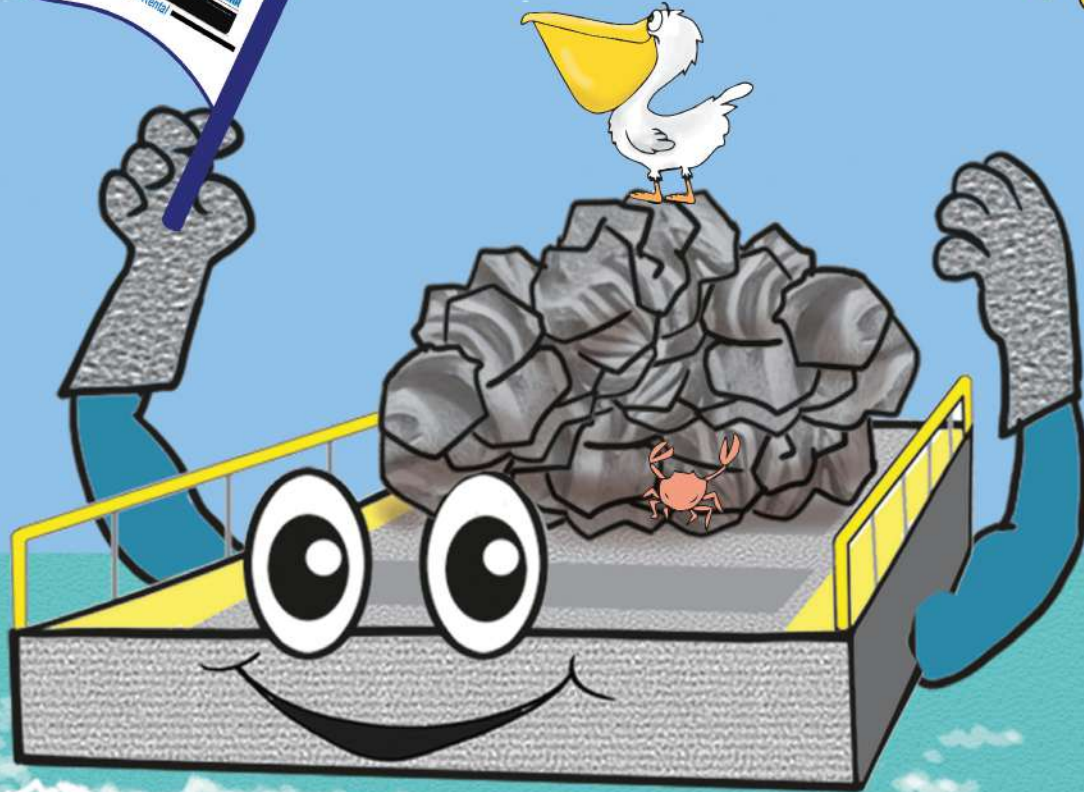
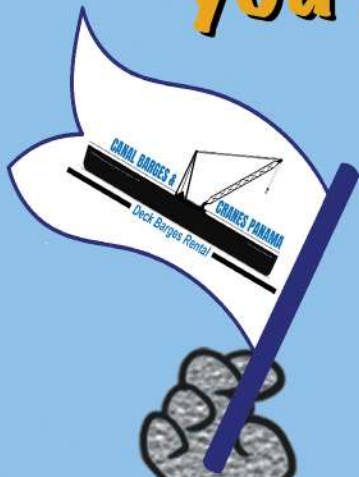
BARGE ANA LUCIA C PERFORMING STS OPERATIONS AT BALBOA ANCHORAGE



Canal Barges & Cranes, in collaboration with Talleres Industriales SA, delivered an innovative, customer-focused solution to address a challenging ship-to-ship (STS) grain transfer operation at Balboa Anchorage. The barge Ana Lucia C was pivotal in transferring cargo from a damaged vessel to another vessel chartered to transport the grain to China. This turnkey operation exemplifies CB&C's dedication to creating tailored solutions, seamlessly managing logistics, and ensuring the client's operational goals were met with precision and efficiency.

With meticulous planning and execution, CB&C ensured the damaged vessel's cargo was safely and efficiently mobilized, restoring the flow of critical goods and minimizing delays for the client. CB&C takes immense pride in providing the infrastructure and expertise that empowers its clients to overcome challenges and achieve success. By combining reliable assets with out-of-the-box thinking, CB&C reinforces its reputation as a trusted partner for solving complex marine logistics needs.

Canal Barge & Cranes Panama, always ready to provide you with solutions



**Floating Platforms to keep your projects moving!
24/7 ALL OVER AMERICA**

www.canalbarges.com.pa
@canalbargespanama